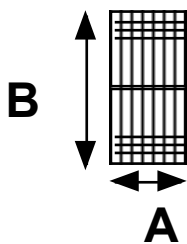


Box Bits #3

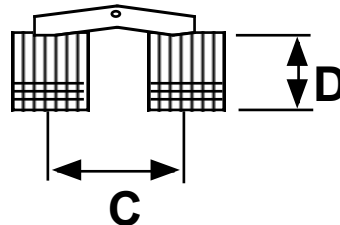
Concealed Barrel Hinges 8mm - 24mm



- These items are a fully concealed barrel hinge manufactured in brass and available in metric sizes between 8mm - 24mm.
- The brass cylinders are equipped with a small set screw which expands the cylinder after it is mounted in an appropriate hole.
- The hinges will open to 180° from the closed position and are suitable for stock sizes from 10mm to 25mm.
- The cylinders also provide a countersunk area for the inclusion of a brass screw as an alternate mounting method.
- The cylinders are joined by a series of brass plated steel leaves, although in some of the cheaper versions these are made from brass sheet, and appropriate care should be taken.



HINGE CLOSED



HINGE OPEN

A	B	C	D
8	20	12.5	10
10	25	16.5	12.5
12	27	20	13.5
14	31	23	15.5
18	36	27	18
24	50	36.5	25

DIMENSION CHART

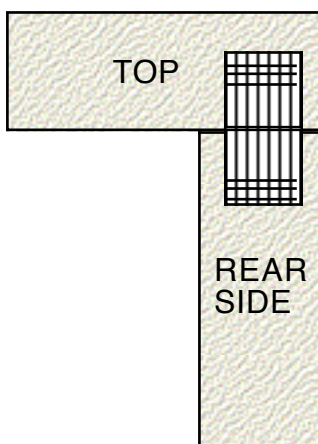
Installation Instructions

The installation holes for these hinges require that they be centered in the stock.

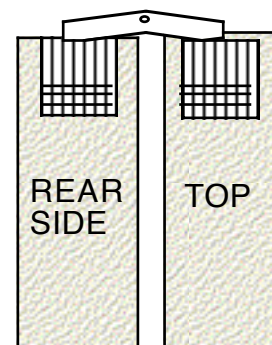
It is important that the installation holes are drilled to the correct depth as per the **Dimension Chart**, and that when installed that the top of the hinge cylinders is flush with the stock.

Once the holes are drilled, and the hinges installed with the correct orientation, the set screw is turned 3 - 4 complete turns with a sturdy jewellers' screwdriver.

The original instructions with the expensive hinges (the cheaper versions do not come with instructions) state that an oversize drill should not be used to drill the mounting holes. However, the cheaper hinges, with brass leaves do not allow any play in a correctly sized hole to orientate the hinge, therefore, an oversized drill bit may be used, and still allow the set screw to lock the cylinder in position. For example, a 21/64" Imperial drill will give an 8.33mm hole.



HINGE CLOSED



HINGE OPEN